



The Coalition for America's Gateways and Trade Corridors

Freight in the Southeast ITTS

Elaine Nettle

Director of Operations & Advocacy

CAGTC

Coalition for America's
Gateways & Trade Corridors

What is CAGTC?

- Coalition for America's Gateways and Trade Corridors: Founded in 2001 as a national advocacy organization for freight infrastructure
- Mission: Raise public recognition and Congressional awareness of the nation's freight needs and to promote sufficient funding in federal legislation for our multimodal goods movement system
- Composition: 60+ member organizations that are geographically and politically diverse from the public & private sectors

CAGTC

Coalition for America's
Gateways & Trade Corridors

Present Landscape



- Two-year bill, funded at \$52/ yr
- Developed first-ever National Freight Policy and other freight provisions
- Expired 9/30/14 and was extended through 5/31/15

CAGTC

Coalition for America's
Gateways & Trade Corridors

Freight Proposals

- Administration's GROW AMERICA Act
 - Six year bill, valued at \$478 billion. \$18 billion for freight over six years, divided evenly between a formula and a discretionary program.
 - Dedicated funding source: Short-term repatriation tax & long-term corporate tax restructuring

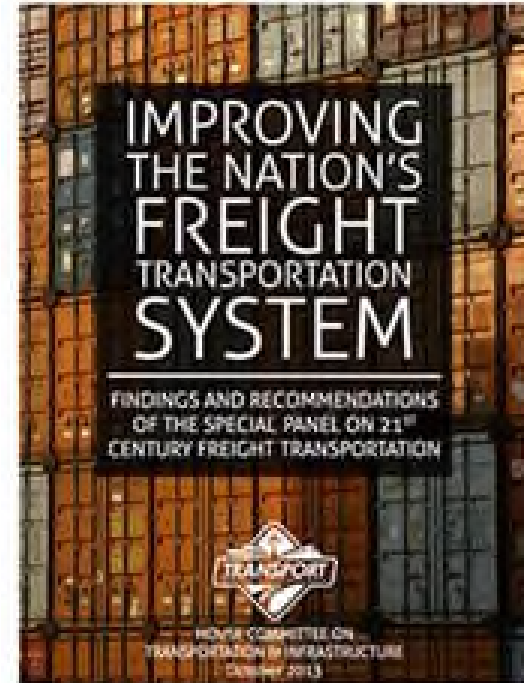
CAGTC

Coalition for America's
Gateways & Trade Corridors

Freight Proposals

House T&I Committee's Six-Month *Special Panel on 21st Century Freight Transportation*

- Establish a multimodal freight policy and network;
- Robust investment in all modes;
- Authorize funding for multimodal freight PNRs; and
- Call on Administration to identify and recommend sustainable multimodal revenue.



CAGTC

Coalition for America's
Gateways & Trade Corridors

Freight Proposals



Rep. Alan Lowenthal (D-CA)

Economy in Motion: The National Multimodal and Sustainable Freight Infrastructure Act

- Forms Freight Trust Fund
 - Establishes 1% waybill fee on goods movement costs - estimated to raise about \$8 billion/ yr
- Develops Freight Formula – 50%
- Creates Competitive Grant Program – 50%

CAGTC

Coalition for America's
Gateways & Trade Corridors

Freight-Specific Proposals

Rep. Janice Hahn (D-CA)

The National Freight Network

Trust Fund Act of 2015

- Forms Freight Trust Fund
 - Directs 5% of currently-collected import duties – estimated to deposit about \$1.9 billion/yr
- Creates Competitive Grant Program tied to the Primary Freight Network



CAGTC

Coalition for America's
Gateways & Trade Corridors

Administration Initiatives

- DOC Advisory Committee on Supply Chain Competitiveness
 - Recommendations call for increased funding distributed through a freight-specific competitive grant program; requested minimum investment of \$2 billion/yr.
- DOT National Freight Advisory Committee
 - Recommendations call for increased funding distributed through a freight-specific competitive grant program. Minimum annual investment not designated.

CAGTC

Coalition for America's
Gateways & Trade Corridors

Speculation



- Money: HTF revenue will not support a bill; repatriation concept gaining supporters
- New Faces: The 114th Congress has 70 new faces, all of whom will need to vote on a final surface transportation bill within five months.
- “Do Nothing Congress”: Republicans will likely be inspired to shake the 113th Congress’ reputation in time for the 2016 Presidential race. The 113th Congress passed just 185 laws.

Follow that Freight Series

FOLLOW THAT... ALMOND

*A nutty trip across the country
with a smooth ending!*

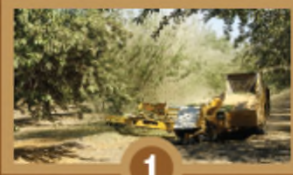


Compliments of:

CAGTC

Coalition for America's
Gateways & Trade Corridors
www.trade corridors.org
202.828.9100

Departure Point:
**CALIFORNIA
ALMOND FARM**



1

The almonds are harvested, picked up by **TRUCK** and taken to a West Coast processing center.



At the processing center they are hulled, shelled and packaged. The almonds travel by **TRAIN** to the Southeastern United States.

2



3



Once in the Southeastern United States, the almonds are unloaded and transported by **TRUCK** to a facility where they are processed into almond butter and packaged for consumers.

4



The almond butter is exported through an East Coast port and travels by **SHIP** across the Atlantic Ocean.

5



Final Destination:
**HAMBURG,
GERMANY**



6

The almond butter arrives in Hamburg, Germany and is transported to retailers for purchase and enjoyment by adults and children alike.

**Almond butter
is sticky.
Goods movement
should be smooth!**

**Strategic investment is
needed to support U.S.
agriculture and move
time-sensitive perishables
from farm to market.**

CAGTC

Coalition for America's
Gateways & Trade Corridors

The Coalition for America's Gateways and Trade Corridors

*For more information,
please contact CAGTC at:*

Tel: 202.828.9100

Or visit:

www.tradecorridors.org

CAGTC

Coalition for America's
Gateways and Trade Corridors